



Maple Class Termly Newsletter

Autumn 1:1

Starts 6th September - Ends 20th October

Welcome back!

We hope you had a lovely summer holiday and that the children are feeling refreshed and ready for the start of an exciting new school year.

Our class will be a mix of Year 1 and 2 children.

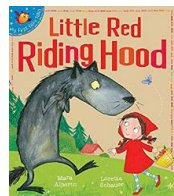
I will be teaching the class this year, supported by Ms Totterdell. We are looking forward to welcoming back the children and getting to know you over the coming weeks.

Our learning this term...

Our topic this term is entitled 'My World and Me' with the children learning about continents and oceans in the world, map skills, climates and human and physical features. They will also learn about the local area of Plymouth.

In Science, the children are learning about 'Growth and Survival', learning about animals and their offspring, the importance of exercise, nutrition and how we change as we grow older.

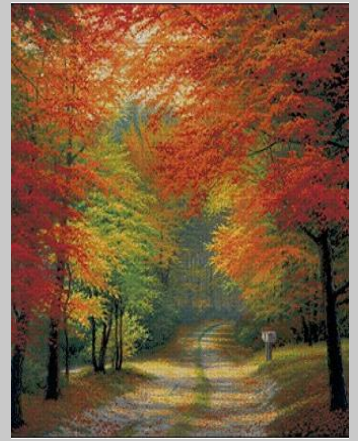
In English, our first text will be the traditional tale 'Little Red Riding Hood'.



The children will learn the story, mapping it and retelling it. They will then work to innovate the story, creating their own unique stories.

They will be writing animal fact files, linked to their work in Science on 'Growth and Survival', learning features of a non-fiction non-chronological text.

They will also be learning the Aesop fable 'The Hare and the Tortoise'. They will learn features of a fable and move on to write an innovated version of the story.



Autumn 1

Please check Class Dojo regularly to be informed of any upcoming dates.

REMINDER:

Please clearly label all uniform and wellies!

Please can you ensure that your child comes to school with a refillable water bottle!

Important Information

Home reading - We ask that you write a comment in your child's reading record each time they have read, and ensure that this is brought into school with their book every day.

Forest School Thursday - Each Thursday afternoon we will continue to do Outdoor Learning. On this day children are required to come to school in appropriate clothing. This includes old, warm clothes that they are able to get muddy and a waterproof coat. They will also need wellington boots which can be kept in school.

PE - Our PE days will be on Monday and Wednesday. Your child should arrive in their PE kit. This consists of a white t-shirt/polo shirt, plain black or navy bottoms (joggers/leggings/PE shorts), plain black or navy sweatshirt or hooded top, and trainers.

Homework - Homework is set on Friday and collected the following Wednesday. New weekly spellings will be set each Monday and tested on Friday.

Weekly spellings will be sent home to learn, with a weekly spelling test on a Friday.

Reminder...

Mondays and Wednesdays - PE (children to arrive in PE kits)

Thursdays - Forest school (suitable clothing to be worn)

DAILY- Children to bring reading record and reading book into school. These will be changed regularly. Practise spellings at home.

IMPORTANT NEW INFORMATION

School gates open at 8.35am for a prompt 8.45am start.

School pick up time is now 3.15pm

Children should be dropped off at the main gates and collected from the top playground

If you have any questions, please speak to one of us at the end of the day or send a message on Class Dojo.

Mrs Cleverley (Class Teacher) & Ms Totterdell (Teaching Assistant)
Year 1/2 Team